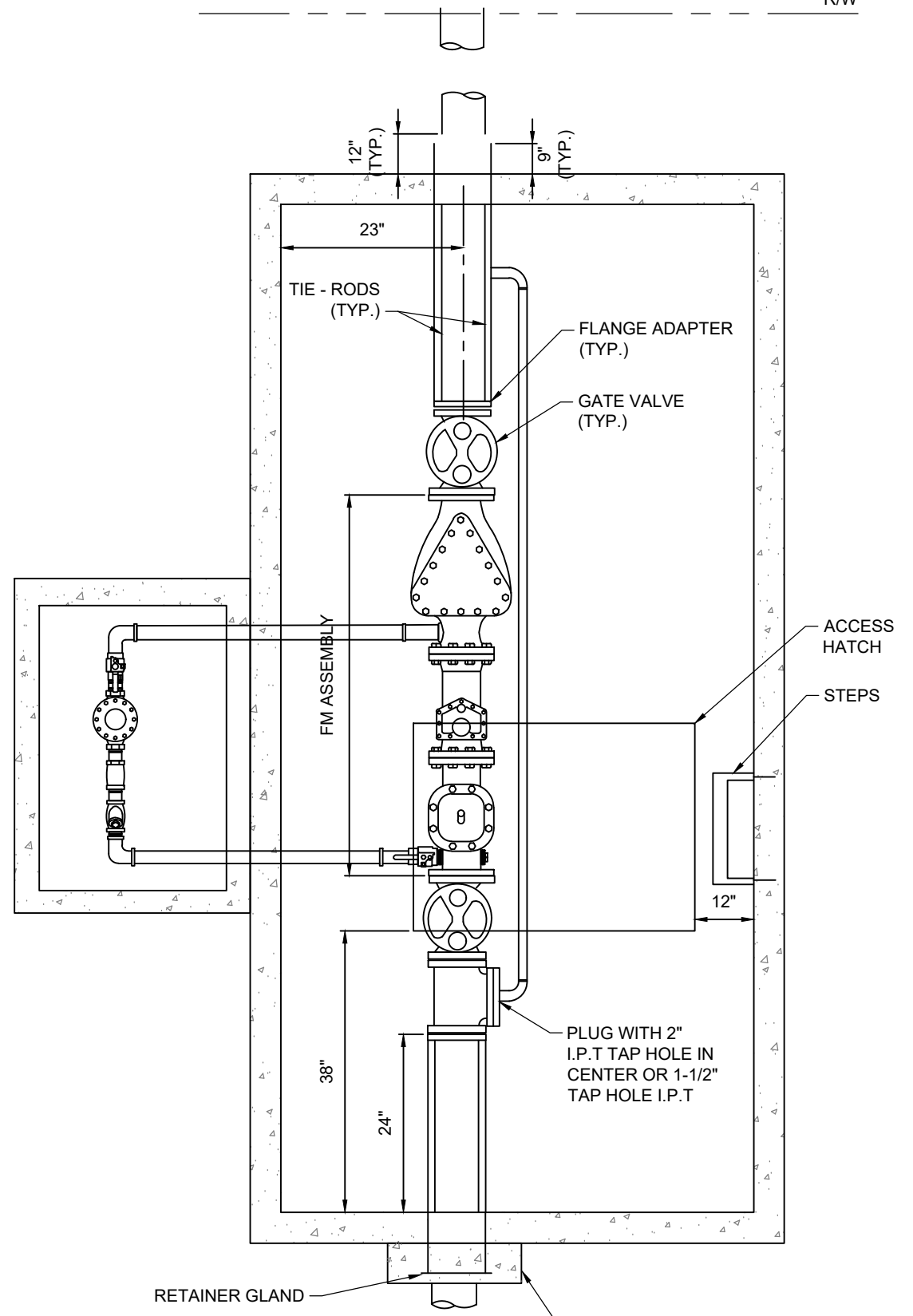


R/W



RETAINER GLAND WITH CONCRETE COLLAR.
COLLAR SHALL EXTEND 12-INCHES BEYOND PIPE IN ALL DIRECTIONS
AND SHALL EXTEND DOWN 3-INCHES BELOW VAULT BOTTOM OF VAULT.

NOTES:

1. TYPE I VAULT SHALL BE USED FOR 3,4,6 OR 8-INCH DOUBLE DETECTOR CHECK BACKFLOW PREVENTER FOR USE WITH 1, 1-1/2 AND 2-INCH METER.
2. SEE FULTON COUNTY WATER STANDARD SPECIFICATIONS SECTIONS 40 05 01 AND 40 05 19 FOR MATERIAL SPECIFICATIONS. ALL MATERIAL TO BE FURNISHED BY CONTRACTOR.
3. ALL FITTING SHALL BE DUCTILE IRON WITH FLANGED JOINTS. GATE VALVES SHALL BE OUTSIDE STEM AND YOKE (OSY) WITH HANDWHEEL.
4. VAULT SHALL BE PRECAST CONCRETE. MIN. INSIDE HEIGHT SHALL BE 6 FEET. LOAD BEARING VAULT SHALL BE DESIGNED BY PROPERTY OWNER'S ENGINEER, AND SUBMITTED TO COUNTY FOR APPROVAL.
5. FOR 3-INCH AND 4-INCH FIRE LINES, BACK FLOW VAULT SHALL BE 10' X 6' X 7' WITH 42" X 42" ACCESS HATCH.
6. FOR 6-INCH AND 8-INCH FIRE LINES, BACK FLOW VAULT SHALL BE 13' X 7' X 7' WITH 54" X 54" ACCESS HATCH.
7. PROVIDE CONCRETE PIER UNDER BFP 12" X 12" X 18" HIGH.
8. PROVIDE RETAINER GLAND ON PIPE BEYOND VAULT WALLS. PROVIDE TWO TIE RODS FROM FIRST INTERIOR FLANGE TO RETAINER GLANDS, WITH DOUBLE NUTS AND WASHERS. ENCASE RETAINER GLANDS IN CONCRETE. ALSO, PROVIDE TIE RODS FROM RETAINER GLAND TO TAPPING VALVE OR CASING UNDER ROAD, WHICHEVER IS CLOSER. RODS SHALL BE PROVIDED WITH BITUMASTIC COATING.
9. VAULT WALL OPENINGS SHALL BE SEALED WITH NON-SHRINK GROUT. ENSURE 1-INCH CLEARANCE BETWEEN TOP OF PIPE AND PRECAST WALL.
10. MANHOLE STEPS SHALL BE DOWELLED INTO VAULT WALL AND CENTERED ON ACCESS HATCH.

METER SIZE	3" & 4"	6" & 8"
VAULT INTERIOR DIMENSION	12' x 6'	13' x 7'
ACCESS HATCH	42" X 42"	54" X 54"

95% SUBMITTAL

FULTON COUNTY STANDARD DETAIL 825

FM ASSEMBLY

DATE	REVISIONS	DATE	REVISIONS
M/Y	XXX	M/Y	XXX

DGS/DRN/CHKD: XXX
 APPROVED: XXX
 DATE: XX-X-XX



FULTON COUNTY PUBLIC WORKS
 141 PRYOR ST. ATLANTA, GA. 30303
 404-612-7400 FAX: 404-224-0498

DRAWING NO.
825