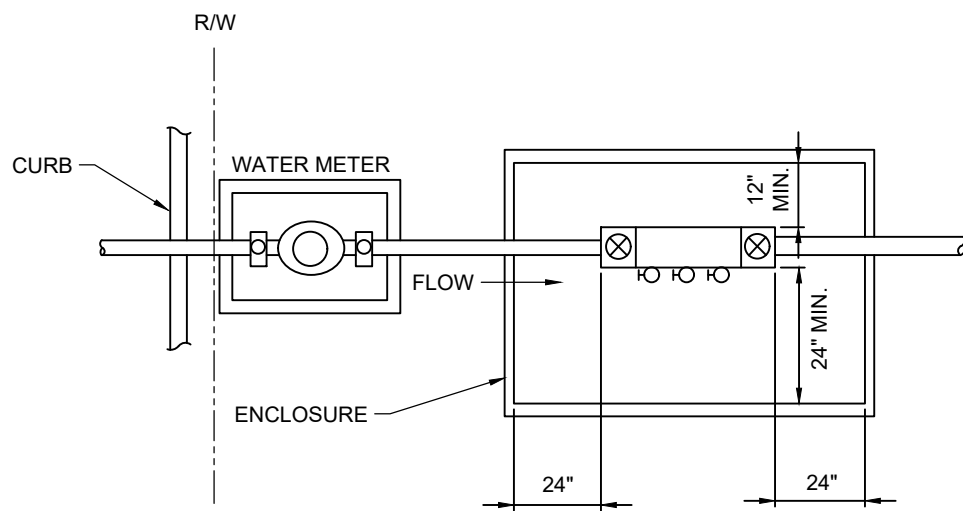


TYPICAL INSTALLATION PROFILE  
N.T.S.



TYPICAL INSTALLATION - PLAN VIEW  
N.T.S.

NOTES:

1. THE REDUCED-PRESSURE BACKFLOW PREVENTION ASSEMBLY (RPBA) SHALL BE INSTALLED WITH ADEQUATE SPACE TO FACILITATE MAINTENANCE AND TESTING. THE INSTALLATION SHOULD NOT REQUIRE PLATFORMS, LADDERS OR LIFTS FOR ACCESS. ADEQUATE CLEARANCE FROM THE FLOOR, CEILING, AND WALLS MUST BE PROVIDED TO FACILITATE THE REMOVAL OF THE RELIEF VALVE AND/OR CHECK VALVES.
2. PROTECT THE RPBA FROM FREEZING TEMPERATURES.
3. IF INSTALLED WHERE TEMPERATURES WILL REACH 110 DEGREES FAHRENHEIT, A HOT-WATER TYPE ASSEMBLY MUST BE USED.
4. AN RPBA SHALL NOT BE INSTALLED IN A PIT BELOW GROUND LEVEL. SEMIBURIED PITS ARE ACCEPTABLE IF THE RPBA IS ABOVE THE GROUND OR THE MAXIMUM FLOOD LEVEL WITH THE APPROVED AIR GAP BETWEEN THE RELIEF VALVE PORT AND THE DAYLIGHT DRAIN.
5. THE DAYLIGHT DRAIN FROM ABOVE GROUND OR SEMIBURIED VAULTS MUST PROVIDE ADEQUATE DRAINAGE FOR THE DISCHARGE FROM THE REDUCED-PRESSURE PRINCIPLE ASSEMBLY RELIEF VALVE PORT.
6. BEFORE INSTALLING AN RPBA, ENSURE THAT THE RELIEF VALVES ARE IN GOOD WORKING CONDITION.
7. IF THE RPBA IS LOCATED INSIDE THE BUILDING, A DRAIN MUST BE PROVIDED TO RECEIVE SPILLAGE FROM THE RELIEF VALVE PORT. THE RELIEF VALVE PORT MUST ALWAYS HAVE AN APPROVED AIR GAP BETWEEN IT AND THE DRAIN OR MAXIMUM FLOOD LEVEL WHICHEVER IS HIGHEST.
8. THE RPBA SHALL NOT BE INSTALLED IN AN AREA WHERE CORROSIVE FUMES OR GASES COULD RENDER THE ASSEMBLY INOPERABLE.

FULTON COUNTY STANDARD DETAIL 808

REDUCED PRESSURE PRINCIPLE  
BACKFLOW PREVENTION ASSEMBLY (2)

DATE	REVISIONS	DATE	REVISIONS
M/Y	XXX	M/Y	XXX

DGS/DRN/CHKD: XXX

APPROVED: XXX

DATE: XX-X-XX



FULTON COUNTY PUBLIC WORKS  
141 PRYOR ST. ATLANTA, GA. 30303  
404-612-7400 FAX: 404-224-0498

DRAWING NO.

808

95% SUBMITTAL