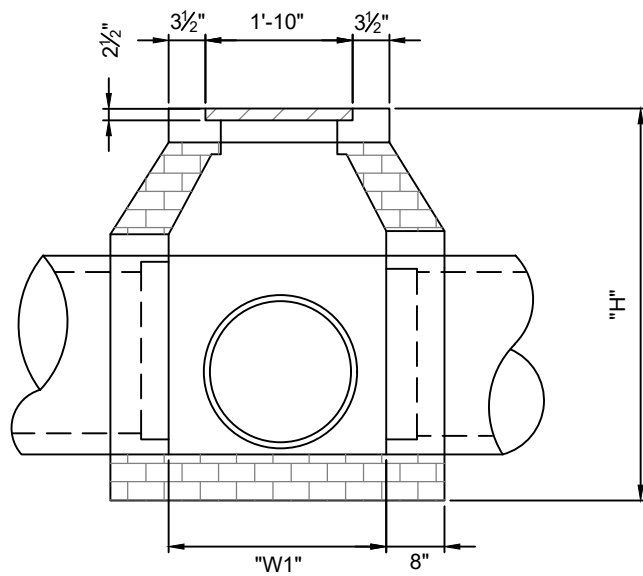
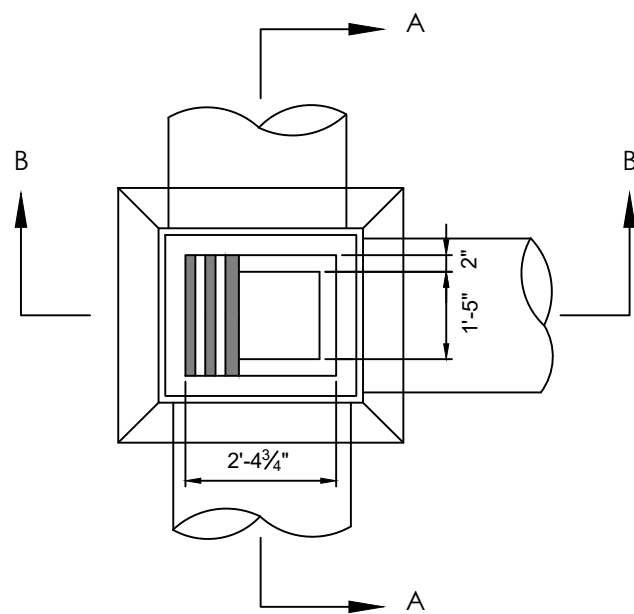


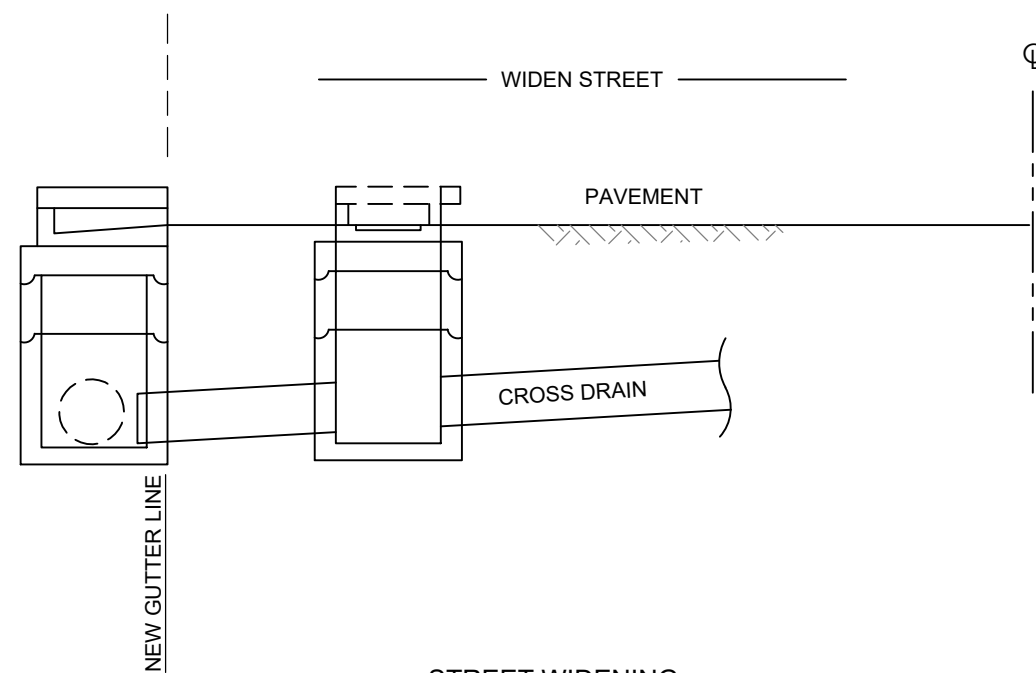
SECTION B-B



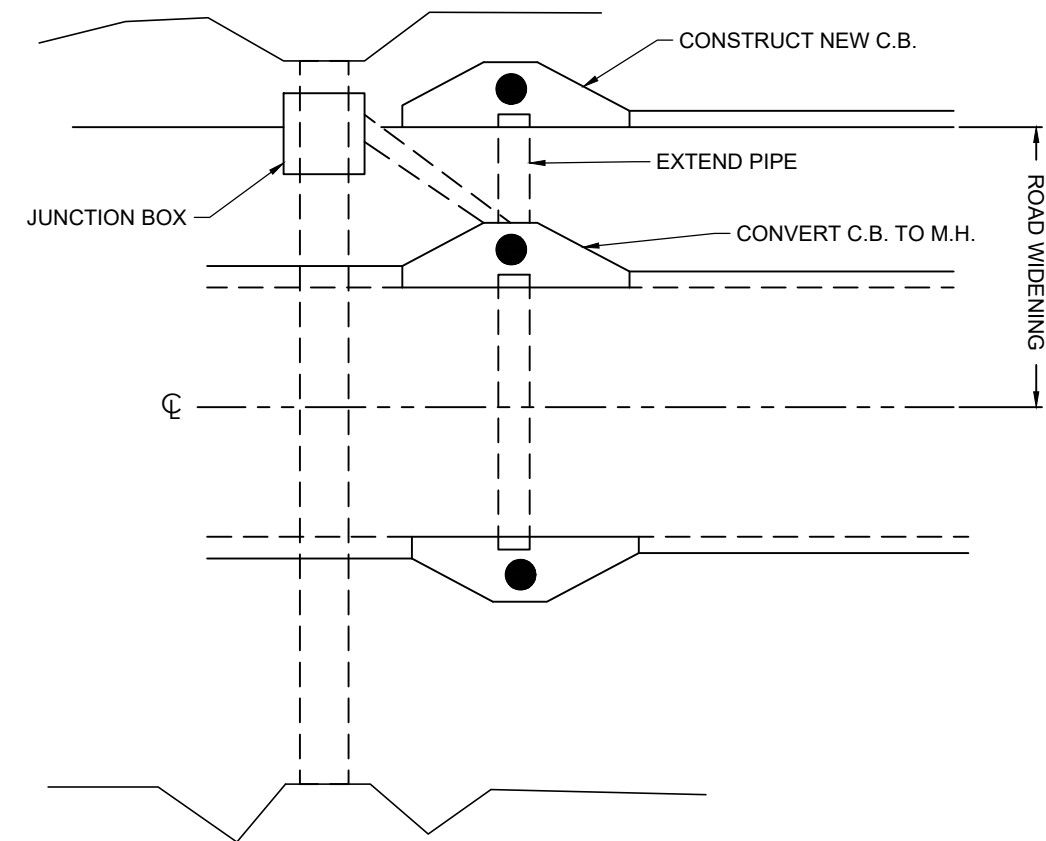
SECTION A-A



PLAN VIEW



STREET WIDENING
CONVERTING CATCH BASIN TO MANHOLE



NOTES:

1. REMOVE EXISTING TOP & THROAT OF CATCH BASIN. ADD BRICK COURSES FOR GRADE ADJUSTMENT. COMPLETE BY ADDING STANDARD MANHOLE FRAME & COVER (#460 LBS. AND SET IN 8" MIN. REINFORCED CONC. SLAB).
2. ALL PIPES WITHIN RIGHT-OF-WAY SHALL BE RCP. THIS INCLUDES PIPE PARALLEL TO ROAD.
3. SEE STANDARD #511 FOR DIMENSION TABLE.

95% SUBMITTAL

FULTON COUNTY STANDARD DETAIL 509
DROP INLETS, BRICK & CATCH BASIN EXTENSION

DATE	REVISIONS	DATE	REVISIONS
M/Y	XXX	M/Y	XXX

DGS/DRN/CHKD: XXX
APPROVED: XXX
DATE: XX-X-XX



FULTON COUNTY PUBLIC WORKS
141 PRYOR ST. ATLANTA, GA. 30303
404-612-7400 FAX: 404-224-0498

DRAWING NO.
509