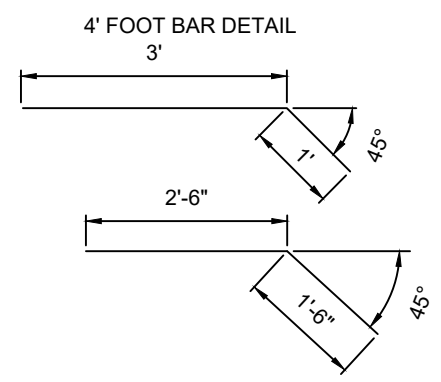
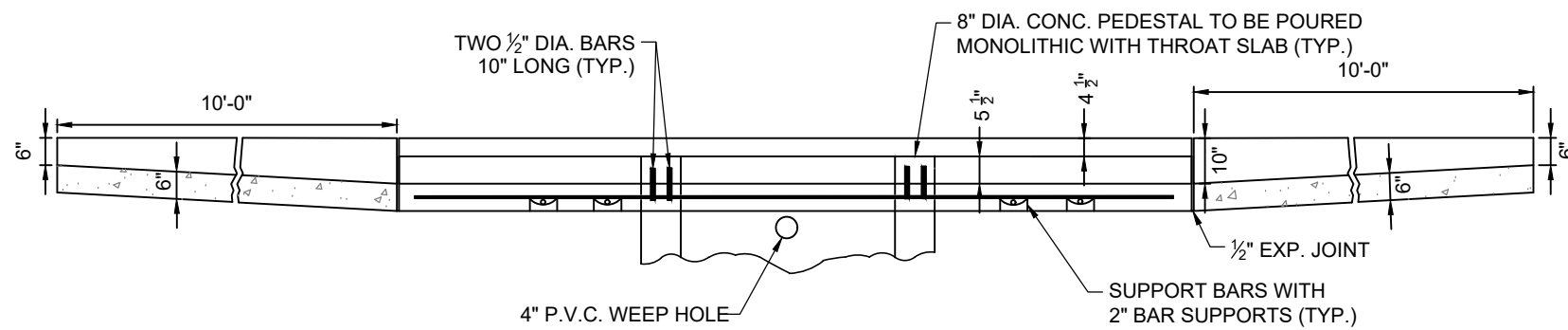


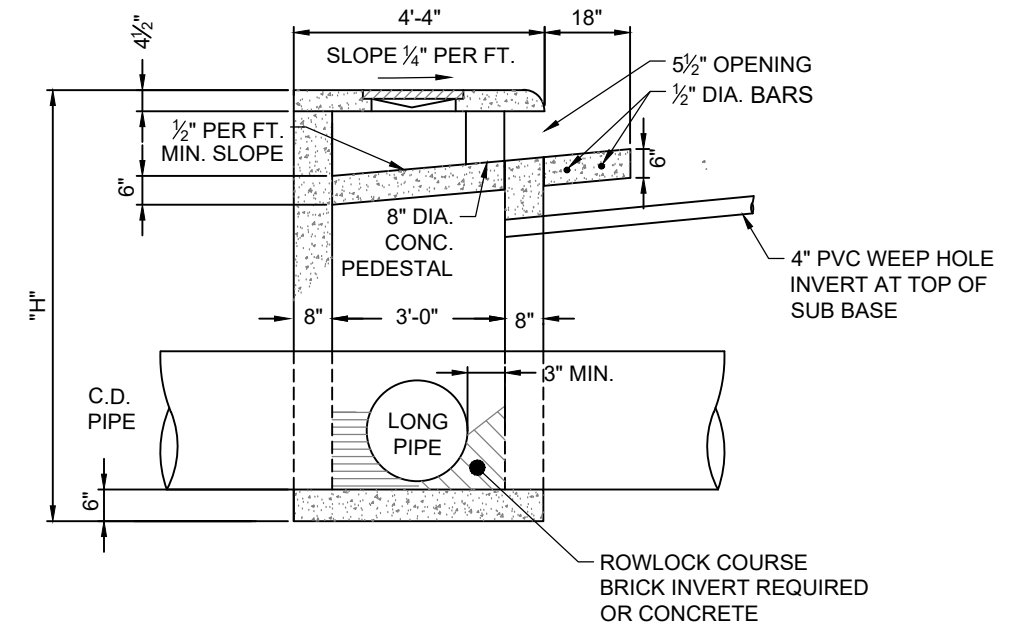
NOTE:

1. FOR ALL CATCH BASINS, 1/2" EXPANSION JOINT MATERIAL SHALL BE PLACED AROUND THE CATCH BASIN WHERE SIDEWALK OR MEDIAN PAVEMENT IS PLACED ADJACENT TO THE CATCH BASIN.
2. CONCRETE STRENGTH TEST REQUIRED FOR ALL POURED IN PLACE CONCRETE.
3. G.D.O.T. STANDARD #10340 IS ALLOWABLE ALTERNATIVE.
4. OPENING AT CATCH BASIN SHALL BE BETWEEN 5 1/2" AND 7".
5. ALL POURED - IN - PLACE CONC. TO BE CLASS "A" 3000 P.S.I.
6. DRAINAGE STRUCTURE TOPS OMITTED FROM DETAILS FOR CLARITY.

INSIDE PIPE DIAMETER (INCHES)	MINIMUM "H"
18	4' - 10"
24	5' - 6"
30	6' - 2"



**SECTION C - C
(CAST IN PLACE)**



SECTION A-A

95% SUBMITTAL

FULTON COUNTY STANDARD DETAIL 505
DOUBLE WING ON-LINE CATCH BASIN

DATE	REVISIONS	DATE	REVISIONS
M/Y	XXX	M/Y	XXX

DGS/DRN/CHKD: XXX
APPROVED: XXX
DATE: XX-X-XX



FULTON COUNTY PUBLIC WORKS
141 PRYOR ST. ATLANTA, GA. 30303
404-612-7400 FAX: 404-224-0498

DRAWING NO.
505