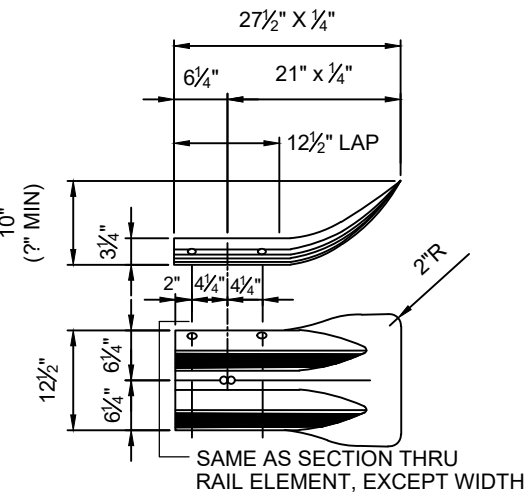
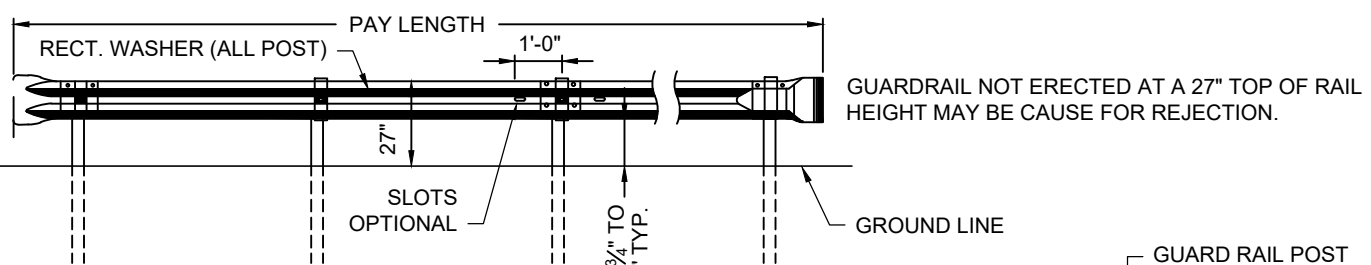
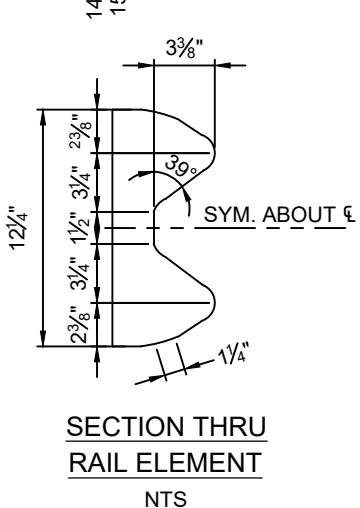


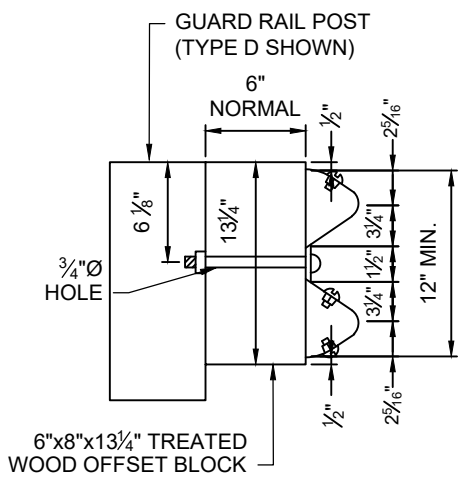
STANDARD OR ALTERNATE TERMINAL SECTION LAPPED ON TRAFFIC FACE OF RAIL (REQ'D. WHERE FULL HEIGHT ERECTION IS UTILIZED).



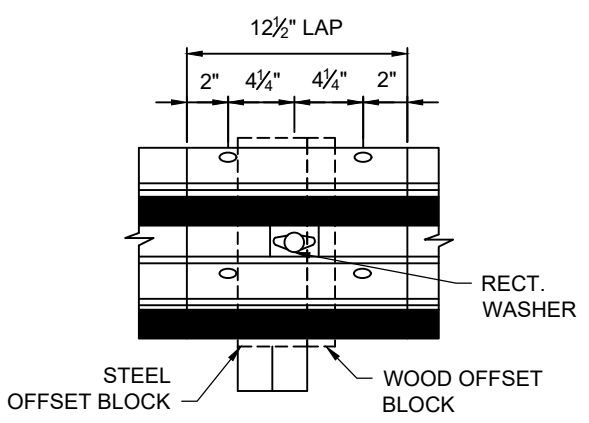
STANDARD TERMINAL SECTION
NTS



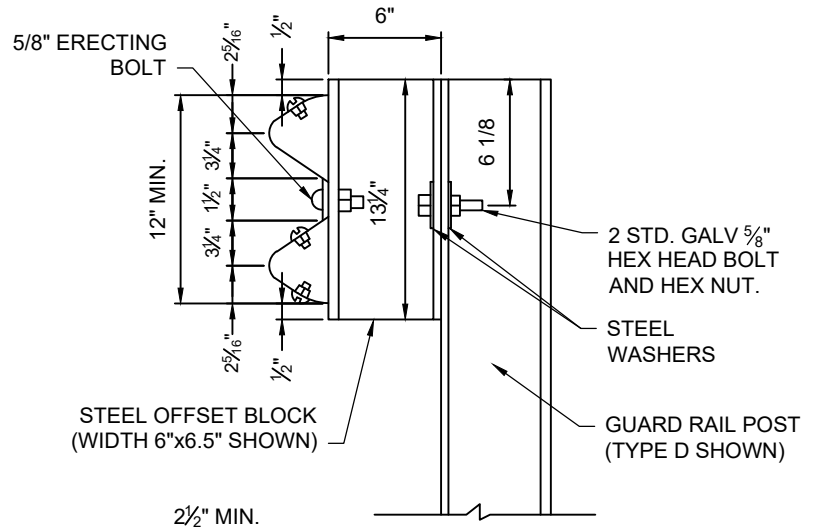
SECTION THRU RAIL ELEMENT
NTS



6"x8"x13 3/4" TREATED WOOD OFFSET BLOCK

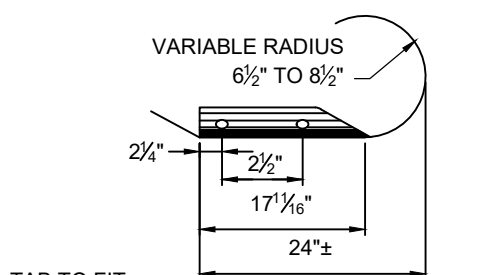


GUARD RAIL SPLICE AT POST
NTS

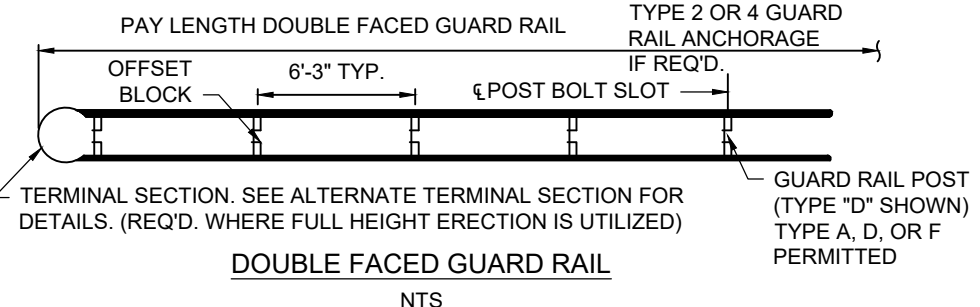


ERECTING BOLT SLOT
NTS

SPLICE BOLT SLOT
NTS

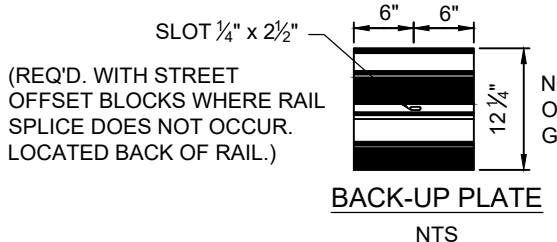


ALTERNATE TERMINAL SECTION
NTS

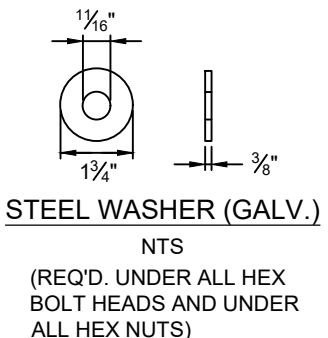


DOUBLE FACED GUARD RAIL
NTS

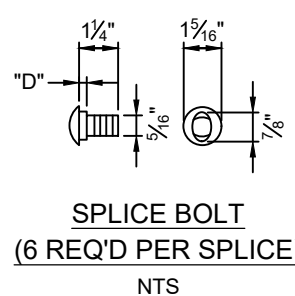
TERMINAL SECTION FOR DOUBLE FACED GUARD RAIL SIMILAR RADIUS VARIABLE 12" TO 16" AND LENGTH VARIABLE.



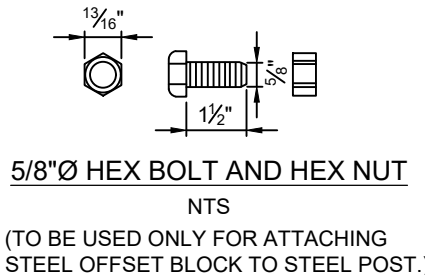
BACK-UP PLATE
NTS



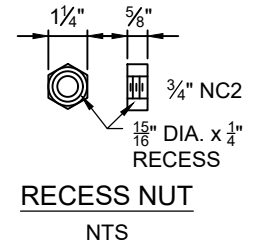
STEEL WASHER (GALV.)
NTS
(REQ'D. UNDER ALL HEX BOLT HEADS AND UNDER ALL HEX NUTS)



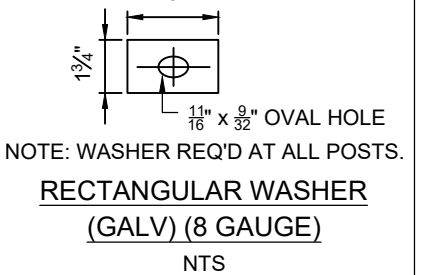
SPLICE BOLT
(6 REQ'D PER SPLICE)
NTS



5/8"Ø HEX BOLT AND HEX NUT
NTS
(TO BE USED ONLY FOR ATTACHING STEEL OFFSET BLOCK TO STEEL POST.)



RECESS NUT
NTS



RECTANGULAR WASHER (GALV) (8 GAUGE)
NTS

NOTES:

1. GUARD RAIL, ITS FITTINGS, PARTS, ETC. ARE TO BE IN ACCORDANCE WITH STATE HIGHWAY DEPARTMENT OF GEORGIA STANDARD SPECIFICATIONS AND/OR SPECIAL PROVISIONS.
2. FOR DETAILS OF POSTS & OFFSET BLOCKS SEE GA. STANDARD 4011.
3. FOR DETAILS OF GUARD RAIL ANCHORAGES SEE GEORGIA STANDARD 4012.
4. FOR LOCATION OF GUARD RAIL SEE APPLICABLE LOCATION STANDARDS.
5. ON PROJECTS WHERE GUARD RAIL CONNECTIONS AT BRIDGE END HAVE BEEN PLACED ON PREVIOUS CONTRACTS THE END PANEL MAY BE SHORTENED BY CUTTING OR SHEARING TO FIT EXISTING STRUCTURE.
6. WHEN GUARD RAIL IS REQUIRED ON CURVES WITH RADII LESS THAN 150' PRECURVED RAIL WILL BE REQUIRED.
7. UNIT PRICE FOR GUARD RAIL TO INCLUDE OFFSET BLOCKS, POST, BACK-UP PLATES WHERE REQ'D, BOLTS, NUTS, WASHERS, TERMINAL SECTIONS, ADDITIONAL POST WHERE REQUIRED AND REMOVAL AND REPLACEMENT OF PORTIONS OF MEDIAN PAVING, SPILLWAYS OR CATCH BASINS WHERE NECESSARY.
8. ALL DIMENSIONS ARE SUBJECT TO MANUFACTURING TOLERANCES.
9. STANDARD NET LENGTH OF RAIL ELEMENTS MAY BE EITHER 12'-6" OR 25'-0". THESE LENGTHS SHALL BE ARRANGED TO PROVIDE AS NEARLY AS POSSIBLE THE OVERALL LENGTH ORDERED BY THE ENGINEER FOR ANY ONE LOCATION.

FULTON COUNTY STANDARD DETAIL 320
BEAM TYPE GUARD RAIL

DATE	REVISIONS	DATE	REVISIONS
M/Y	XXX	M/Y	XXX

DGS/DRN/CHKD: XXX
APPROVED: XXX
DATE: XX-X-XX



FULTON COUNTY PUBLIC WORKS
141 PRYOR ST. ATLANTA, GA. 30303
404-612-7400 FAX: 404-224-0498

DRAWING NO.
320

95% SUBMITTAL