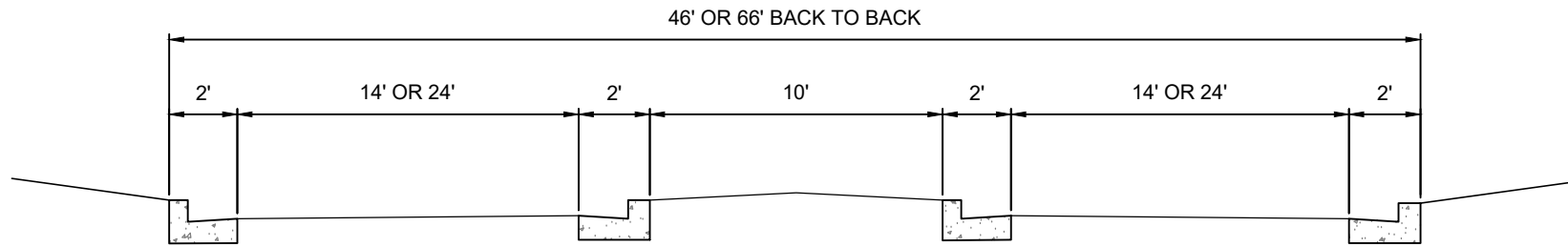


TABLE 305-1 DRIVEWAY/INTERSECTION			
DRIVEWAY/INTERSECTION USE	WIDTH IN FEET		MIN. RADIUS IN FEET
	MIN.	MAX.	
RESIDENTIAL DRIVEWAY (1-3 UNITS)	14	18	5' (RADIUS OR FLARE)
RESIDENTIAL STREET (TWO LANES)	20	25	30'-0"
COMMERCIAL DRIVEWAY	24	30	35'-0"
WHEN DESIGNED FOR TRUCKS	24	40	75'-0"
TWO-LANE DIVIDED DRIVEWAY	46	66	30'-0"
FOUR-LANE DIVIDED DRIVEWAY	46	66	30'-0"

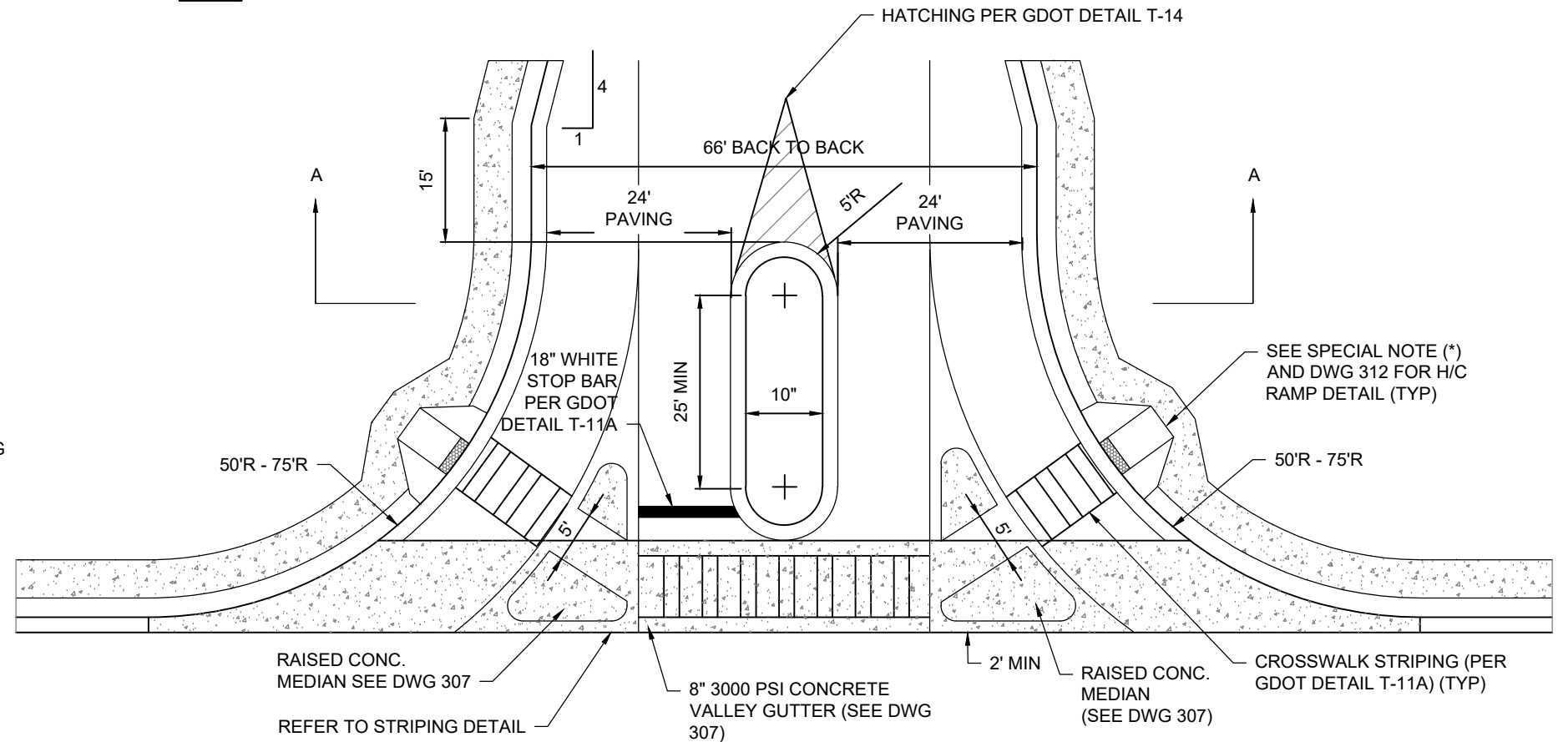
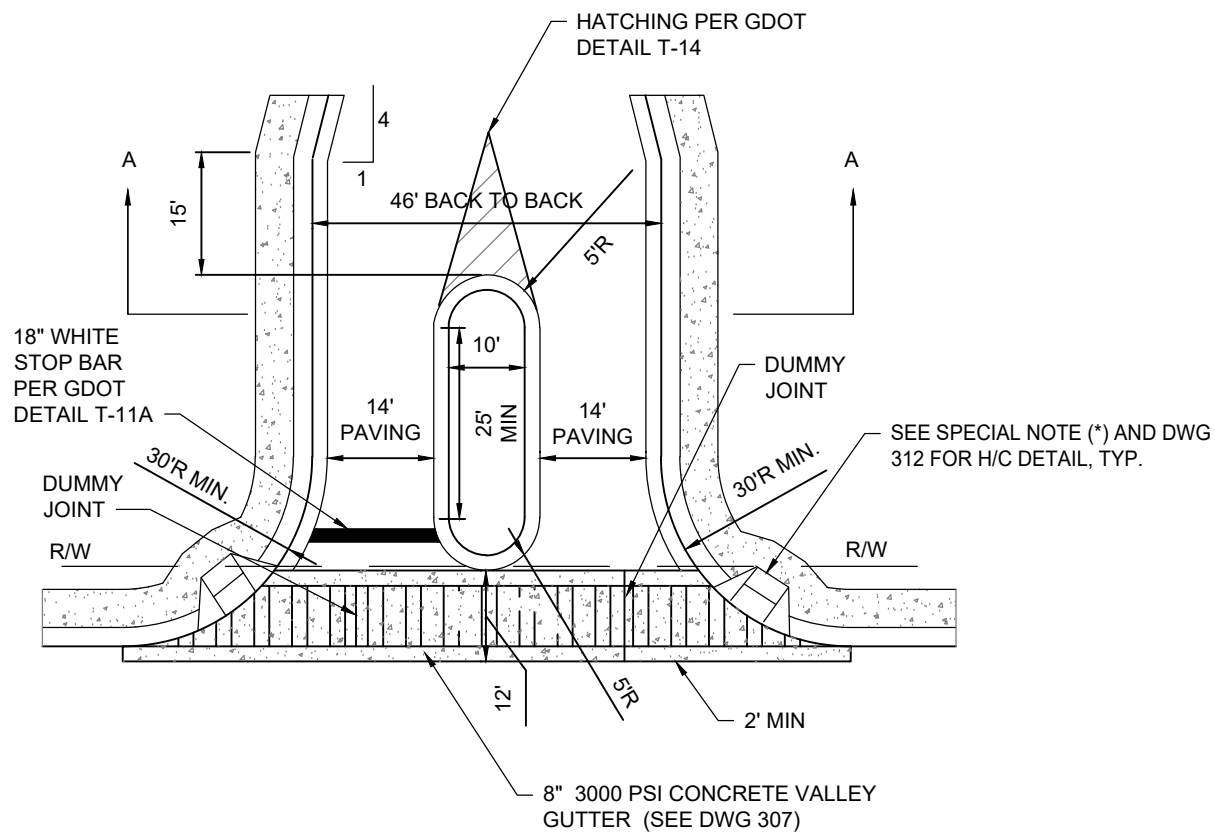
TABLE 305-2 CONCRETE DRIVES	
RESIDENTIAL	COMMERCIAL
6" CONCRETE VALLEY GUTTER	8" CONCRETE VALLEY GUTTER
4" CONCRETE VALLEY	8" CONCRETE DRIVEWAY

NOTES:

- PUBLIC STREET INTERSECTIONS SHALL BE ASPHALT.
- ALL STRIPING MUST BE DONE ACCORDING TO THE LATEST MUTCD STANDARDS.
- ALL STRIPING DESIGNS TO BE APPROVED BY COUNTY ENGINEER/INSPECTOR.
- FOR CURB RAMP WITH DETECTABLE WARNING: DETECTABLE WARNING SHALL BE 24 INCHES IN THE DIRECTION OF PEDESTRIAN TRAVEL AND EXTEND THE FULL WIDTH OF THE CURB RAMP OR FLUSH SURFACE. REFER TO GDOT STANDARD SHEET A4 FOR INSTALLATION INSTRUCTIONS.



SECTION A-A
NTS



OPTIONAL DIVIDED ENTRANCE
(PRIVATE OR COMMERCIAL)

NTS

FULTON COUNTY STANDARD DETAIL 305

DIVIDED ENTRANCE DETAILS

DATE	REVISIONS	DATE	REVISIONS
M/Y	XXX	M/Y	XXX

DGS/DRN/CHKD: XXX
 APPROVED: XXX
 DATE: XX-X-XX



FULTON COUNTY PUBLIC WORKS
 141 PRYOR ST. ATLANTA, GA. 30303
 404-612-7400 FAX: 404-224-0498

DRAWING NO.

305

95% SUBMITTAL