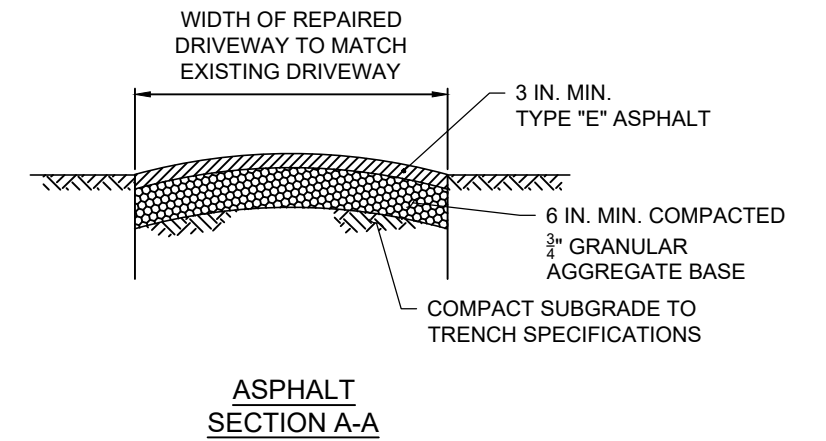
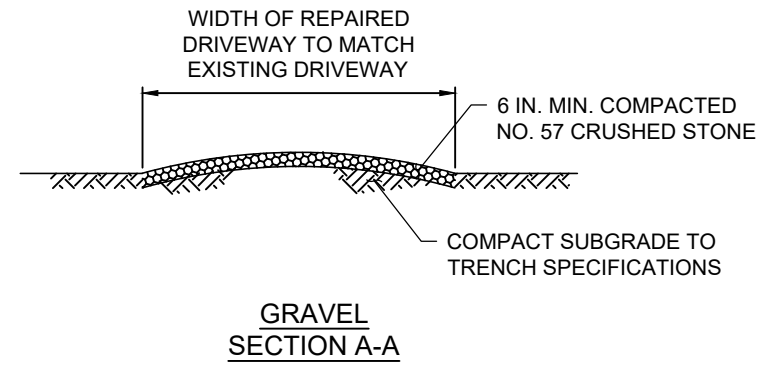
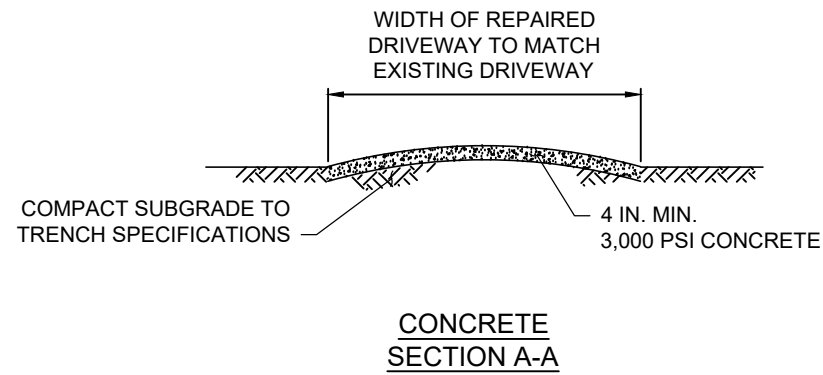
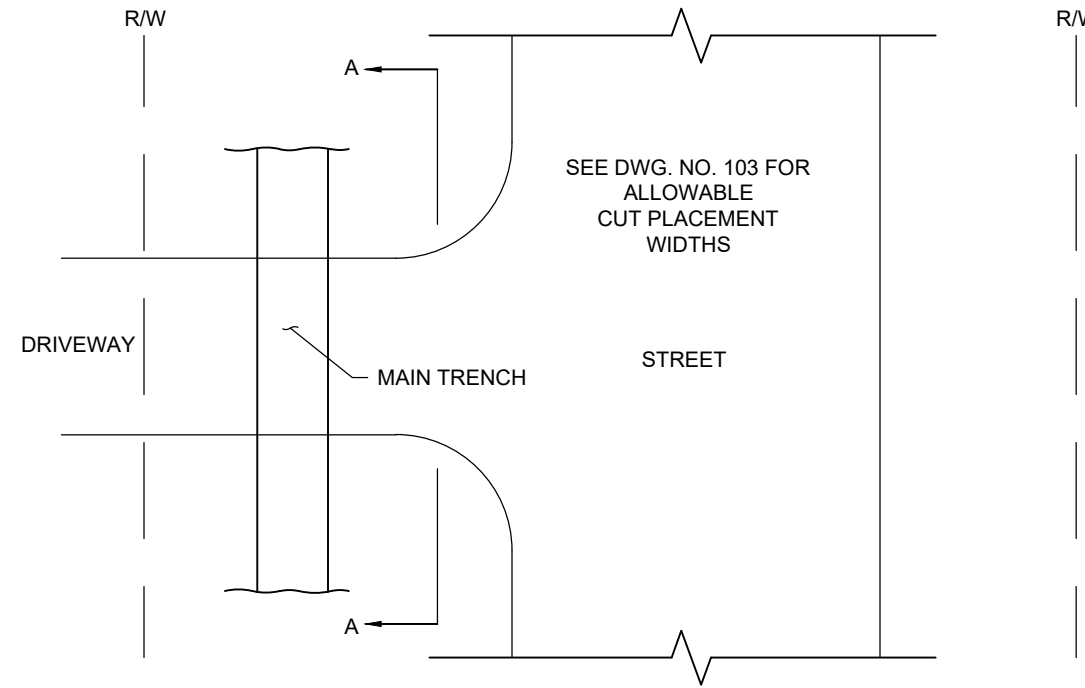


NOTES:

1. FINISHED SURFACE OF REPAIRED AREA TO BE FLUSH WITH ADJACENT EXISTING SURFACE.
2. EDGES OF CUT TO BE SAWN VERTICALLY.
3. EXPANSION JOINTS TO BE USED AS DIRECTED.
4. SEE DWG. 110 FOR STREET CUT REPAIRS.



FULTON COUNTY STANDARD DETAIL 131

DRIVEWAY CUT REPAIRS
CONCRETE, GRAVEL AND ASPHALT

DATE	REVISIONS	DATE	REVISIONS
M/Y	XXX	M/Y	XXX

DGS/DRN/CHKD: XXX

APPROVED: XXX

DATE: XX-X-XX



FULTON COUNTY PUBLIC WORKS
141 PRYOR ST. ATLANTA, GA. 30303
404-612-7400 FAX: 404-224-0498

DRAWING NO.

131