

## SPECIFICATIONS

### Above Grade Water Sampling Station

#### Model 301D

The water sampling station shall consist of a main shut-off ball valve, a spigot and throttling valve and a built-in evacuation tube. The unit shall be constructed with a brass and/or stainless steel water way. The below grade water way portion of the station shall be encased in a non-corrosive housing. The above grade portion of the station shall be enclosed within a lockable polyethylene housing.

The main shut-off valve shall be ball valve type with brass body and a stainless steel ball. This valve shall be one-quarter turn operation and shall be of a maintenance free design. The throttling spigot shall consist of a ball valve of the same design and a stainless steel spigot. The throttling valve shall be placed in-line, above grade, at a distance from the spigot end which facilitates a steady flow of water containing no aeration.

The evacuation tube shall allow all water to be removed from the unit by means of a portable, hand-held pump. This tube shall allow all water to be removed from the station after each use to minimize bacteria growth and provide freeze protection.

All piping in the unit shall be constructed of brass or stainless steel or a combination of these materials. All waterway materials shall be non-corrosive. The buried portion of the water way shall be completely enclosed in a non-corrosive, non-conductive outer housing.

The above grade portion of the unit shall be enclosed in a polyethylene enclosure. The enclosure shall have a removable top which, when removed, provides complete access to the throttling valve, spigot, main shut-off valve and evacuation tube. The removable top shall be lockable by means of a tamper proof lock. The enclosure shall be manufactured with ultraviolet inhibitors for maximum life expectancy in outdoor installations.

The unit shall be Model 301D as manufactured by Water Plus Corporation, Pensacola, Florida, or approved equal.

### MODEL 301D - DRY BARREL DESIGN

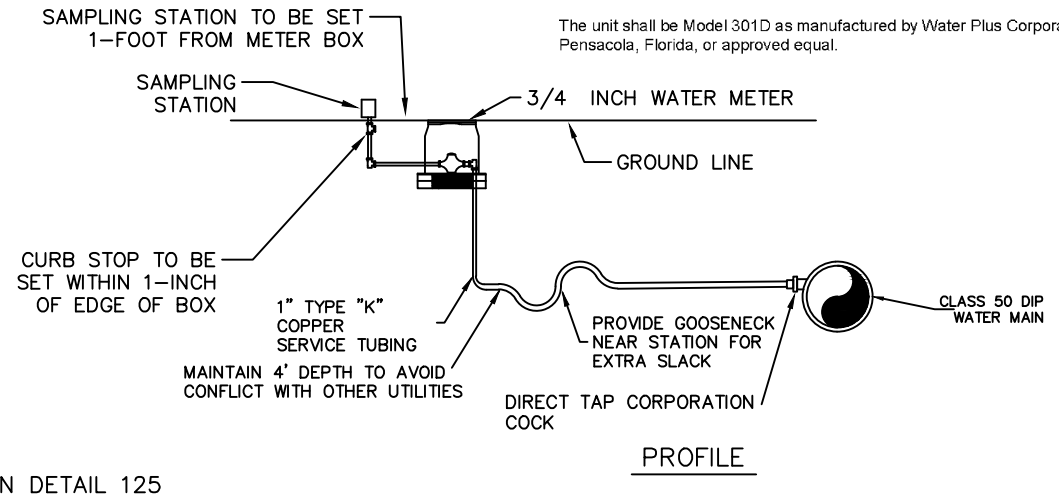
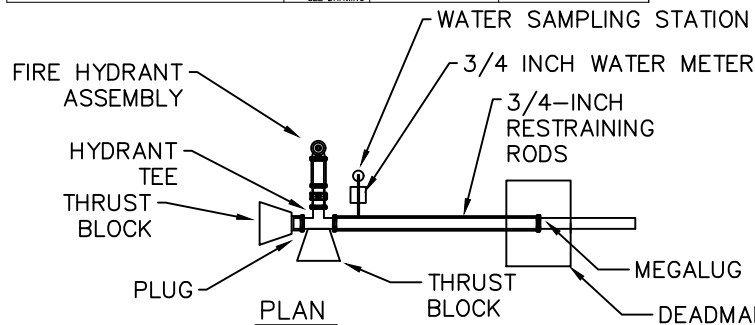
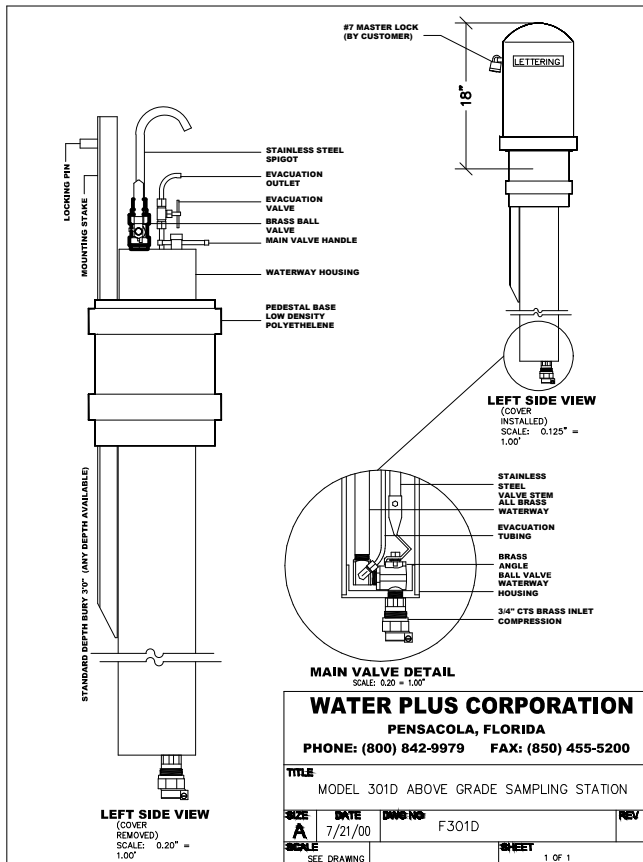
#### MODEL 301D DRY BARREL DESIGN CLOSED & LOCKED

#### The Model 301D

The Model 301D sampling station features a high impact resistant polyethylene enclosure available in two standard colors; medium green and blue. The blue enclosure shall be installed. Station security is accomplished through standard pin allen bolt. Additional station security is provided by a stainless steel latch lock handle located on the throttling valve which accepts a standard pad lock. The 301D features all brass and stainless steel waterway, stainless steel spigot for flaming, brass throttling valve, 3/4" CTS compression inlet and a totally enclosed PVC housing which protects all operating mechanisms.

The Model 301D features a dry barrel design. Barrel evacuation is achieved through a 1/4" copper evacuation tube using a hand pump or compressed air. Standard depth bury is 36" with any depth available. The 301D is activated by opening the main valve. Operator may then throttle the water flow using the spigot mounted ball valve. When sampling is complete, operator closes main valve, opens 1/4" evacuation valve and evacuates the station.

**NOTE:**  
CENTER OF FIRE HYDRANT AND CENTER OF SAMPLING STATION ARE TO BE SET 1.5- FEET FROM THE BACK OF CURB.



FULTON COUNTY STANDARD DETAIL 826  
WATER SAMPLING STATION

DATE	REVISIONS	DATE	REVISIONS
1/18	TPM		

DGS/DRN/CHKD: TPM  
APPROVED: TPM  
DATE: 1-30-18



FULTON COUNTY PUBLIC WORKS  
141 PRYOR ST. ATLANTA, GA. 30303  
404-612-7400 FAX: 404-224-0498

DRAWING NO.  
826