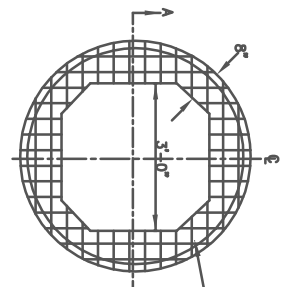
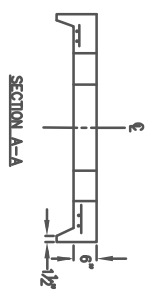


TOP A THROAT WILL BE PRECAST.
GROUT ALL JOINTS.

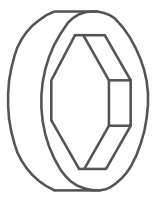


REINFORCING TO BE 2/2 6#8 WELDED I.O. GAUGE WIRE FABRIC WITH 4-5 BARS DIAGONAL 4'-8" DIA

ROUND TO SQUARE ADAPTER

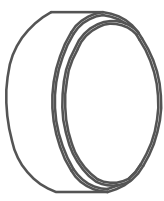


SECTION A-A



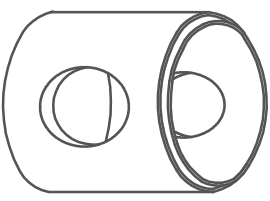
SQUARE TO ROUND ADAPTER

RISER SECTION (1/4 req'd) AVAILABLE IN HEIGHTS 1'-0", 1'-6", 2'-0", 2'-6", 3'-0", 3'-6", 4'-0"

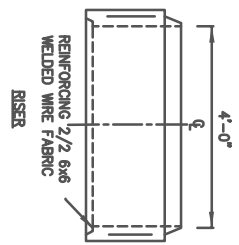


MONOLITHIC BASE HOLES MUST BE PRECAST

NOTE: ALL CONCRETE SHALL BE 4000 PSI



FULTON COUNTY STANDARD DETAIL 507 STANDARD PRECAST ROUND CATCH BASINS

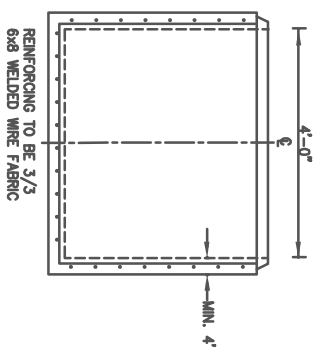
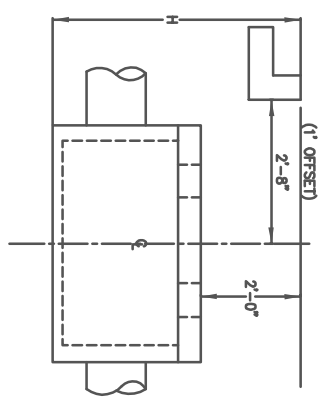


REINFORCING 2/2 6#8 WELDED WIRE FABRIC RISER

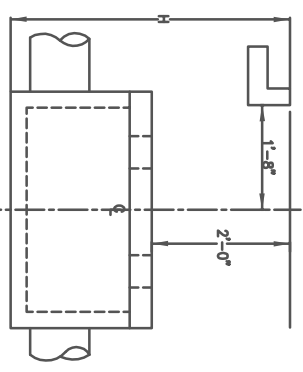
BASE HEIGHT	METAL PIPE	CONC. PIPE	4" (MIN.)
4' DIA - 2'-6"	18"	12"	6" - 0"
3' - 0"	24"	18"	5' - 6"
3' - 6"	30"	24"	6' - 0"
4' - 0"	30"	30"	6' - 6"

*OTHERWISE BOX MUST BE BUILT OUT OF BRICK

NOTES:
CATCH BASIN SHALL BE INSTALLED WITH PIPE OPENING AS SPECIFIED. STEPS TO BE INSTALLED ON 15" VERTICAL SPACING. SEE PRECAST MANHOLE STANDARD FOR SPECIFICATIONS.



REINFORCING TO BE 3/3 6#8 WELDED WIRE FABRIC



CENTRELINE OF CATCH BASINS

DATE	REVISIONS
8/08	RC

DATE	REVISIONS

DGS/DRN/CHHO: CMS
APPROVED: _____
DATE: 12-2-05



FULTON COUNTY PUBLIC WORKS
141 PRYOR ST. ATLANTA, GA. 30303
404-612-7400 FAX: 404-224-0498

507

DRAWING NO.