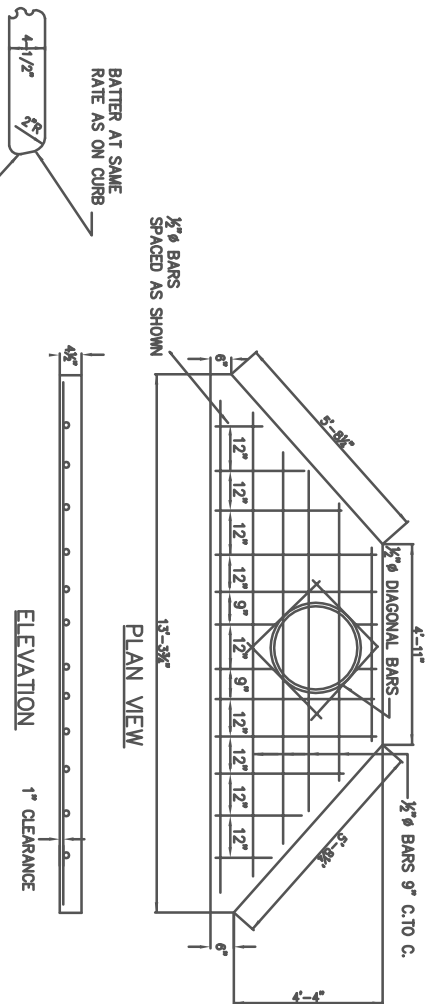
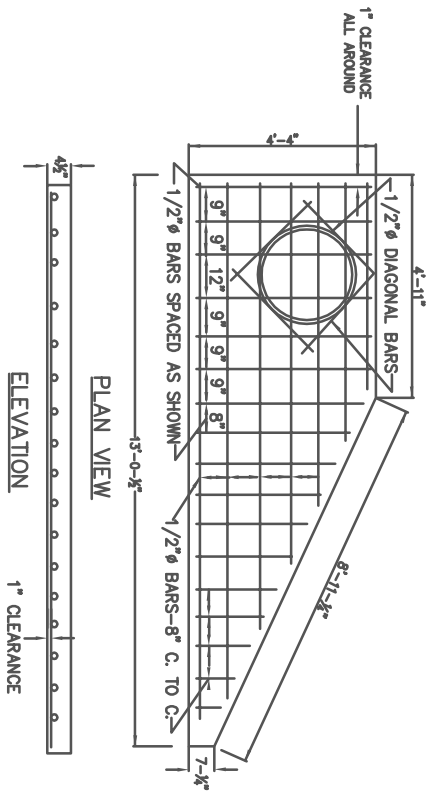
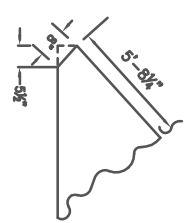
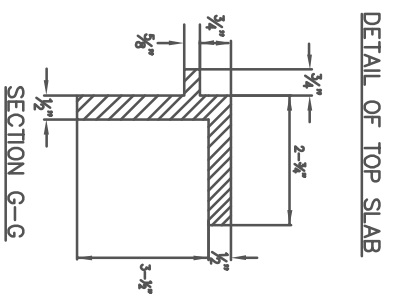
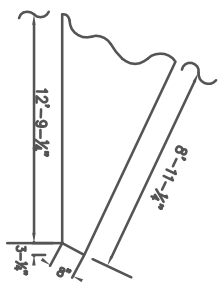


TOP SLAB TO HAVE WOOD FLOAT FINISH

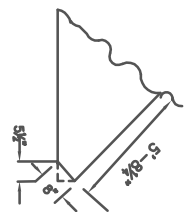


USE FOR OFFSET CATCH BASIN

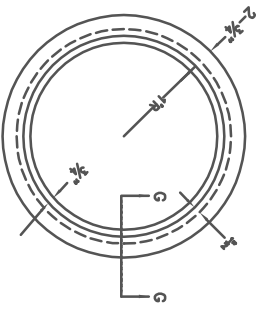
DETAIL OF TOP SLAB



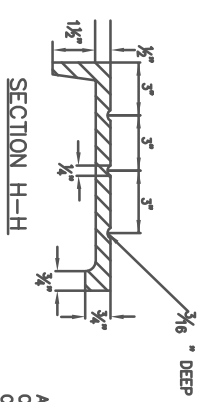
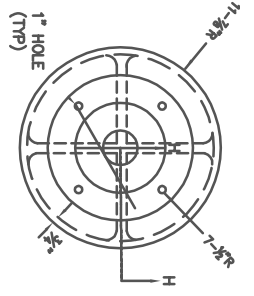
USE FOR OFFSET CATCH BASIN



RING



COVER



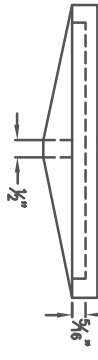
APPROXIMATE WEIGHTS—
CAST IRON RING 78 LBS.
CAST IRON COVER 63 LBS.

△ G.D.O.T. STANDARD #1033D IS ALLOWABLE ALTERNATIVE
G.D.O.T. STANDARD #1034D IS ALLOWABLE ALTERNATIVE

ELEVATION



ELEVATION



FULTON COUNTY STANDARD DETAIL 506
CATCH BASIN TOPS

DATE	REVISIONS	DATE	REVISIONS
8/08	RC		

DGS/DRN/CHKD: GMS
APPROVED: REW
DATE: 12-2-05



FULTON COUNTY PUBLIC WORKS
141 PRYOR ST. ATLANTA, GA. 30303
404-612-7400 FAX: 404-224-0498

DRAWING NO.

506